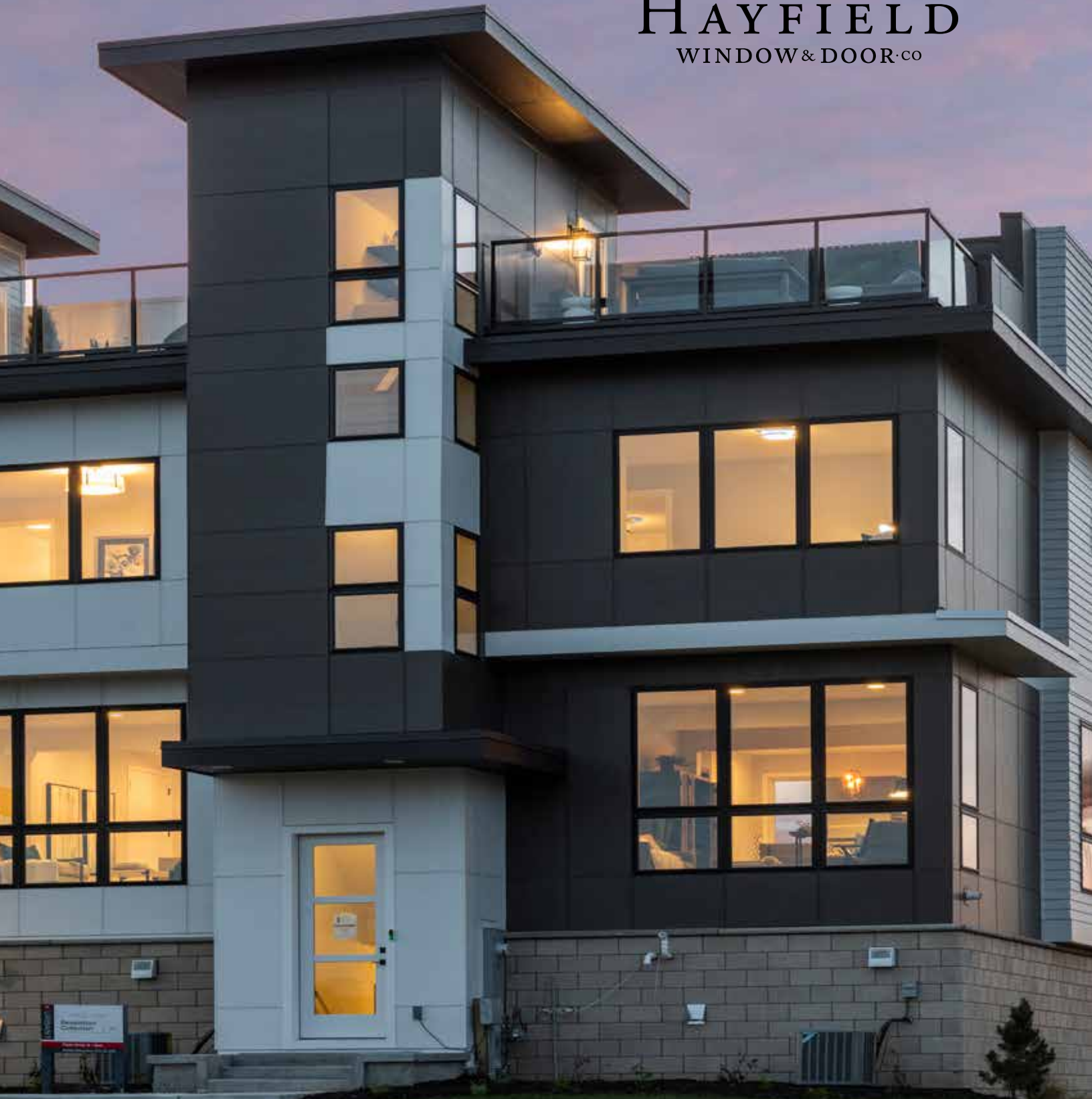




HAYFIELD
WINDOW & DOOR CO



Windows

Single Hung - Single Slider

HAYFIELDWINDOWS.COM

VINYL CLASSICS

201 Single Hung & Slider

Single hung windows offer a traditional look and feature self-adjusting locks and a tilting bottom sash for cleaning.



201 VINYL CLASSICS SINGLE SLIDER WITH BLACK EXTERIOR



201 VINYL CLASSICS SINGLE HUNG WITH BEIGE INTERIOR

Single slider windows bring ventilation without obstructing the outdoor area — great for patios and entryways.



COLORS & VENEERS

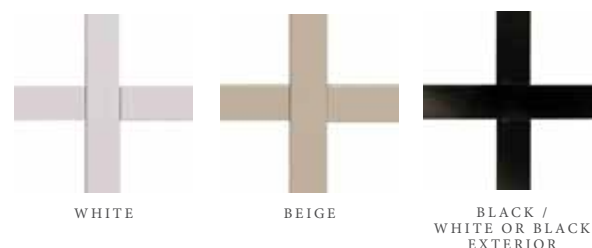
To meet today's high style of architectural design, we offer custom colors and finishes.

SHAPES & SIZES

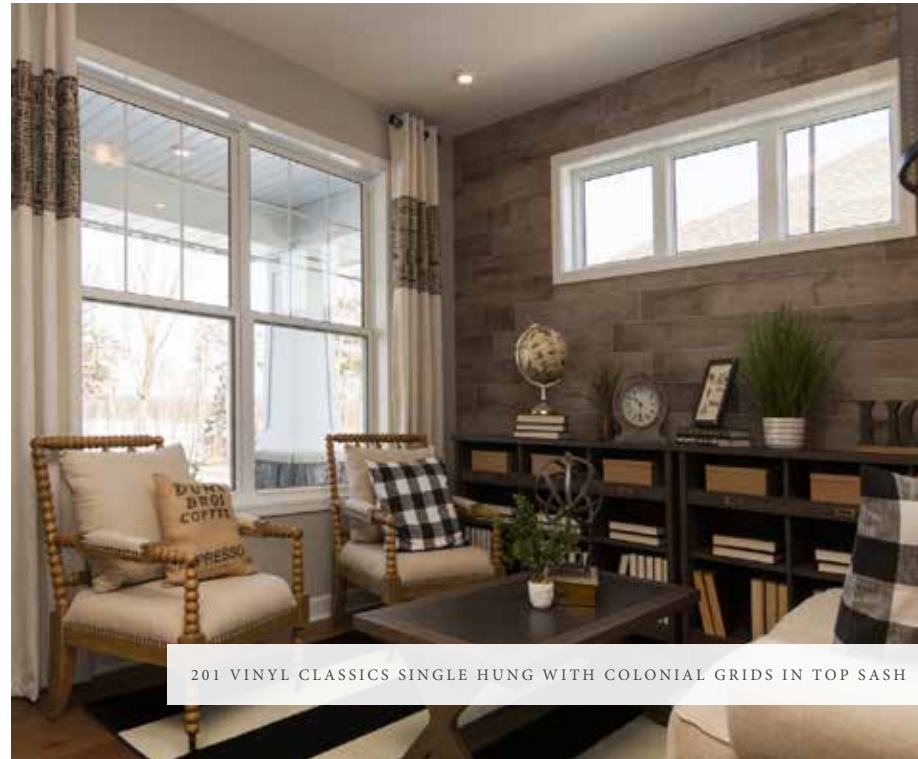
Hayfield's quality windows also come in quarter-rounds, half-rounds, pentoids, trapezoids, ellipsicals and others.

INTERNAL GRILLES

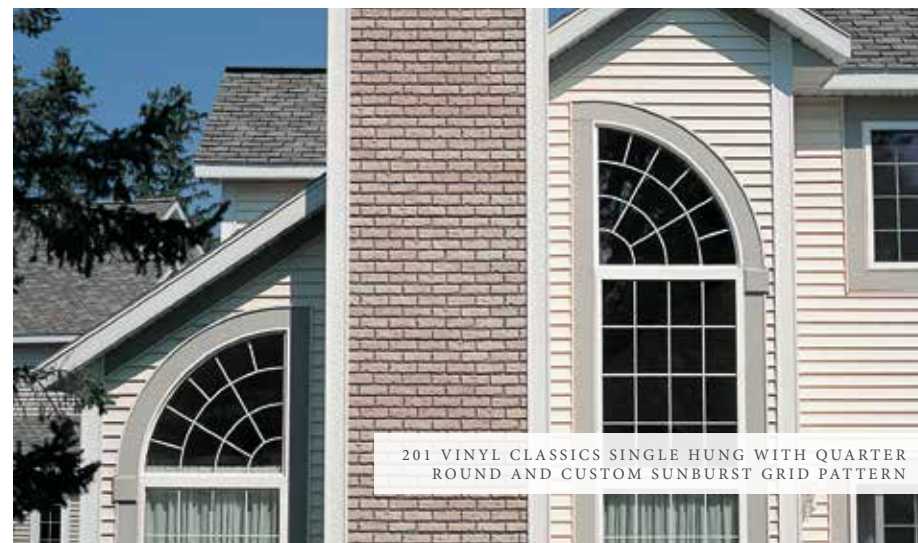
An easy way to beautify your home giving it individuality and curb appeal.



Upgraded constant force balances are standard on every single hung and double hung window manufactured by Hayfield Window & Door Co. This stainless steel coil balance system ensures all single hung and double hung windows operate easily.



201 VINYL CLASSICS SINGLE HUNG WITH COLONIAL GRIDS IN TOP SASH



201 VINYL CLASSICS SINGLE HUNG WITH QUARTER ROUND AND CUSTOM SUNBURST GRID PATTERN



201 VINYL CLASSICS SINGLE SLIDER WITH HALF ROUND AND STARBURST GRID PATTERN

VINYL CLASSICS

Window Options

Hayfield Vinyl Classics are available in white and beige with matching jamb extensions. Half rounds and quarter rounds are also an option, and add an elegant look to a home, from the inside and out. Multiple configurations and styles are available.

ENERGY EFFICIENCY OPTIONS:

- Low-E Glass
- Triple Glazed
- Foam Filled
- Argon Gas

STANDARD OPTIONS:

- 2 ¾ in. frame – 201
- 3 ¼ in. frame adaptor
- Integrated nailing fin

OPTIONAL INSTALLATION FEATURES:

- Brickmould
- Sill Nose
- Quick J
- Jamb Extension Applied
- Jamb Return

COLOR COATING

AQUA SURTECH is a well-tested and field-proven coating system that provides outstanding protection against all weather conditions and assures long lasting satisfaction. AQUA SURTECH is an organic waterborne coating system, and has been tested to AAMA and ASTM standards.

PAINTS & LAMINATES

Exterior laminates and exterior paints have a 10 year warranty.



INTERIOR & EXTERIOR SOLID COLORS

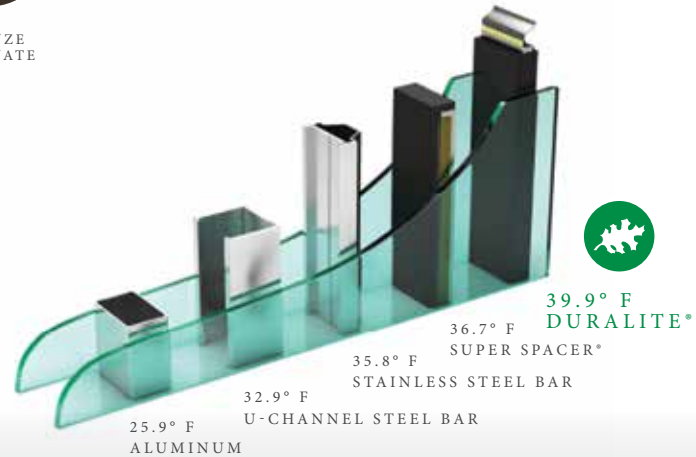


201 Vinyl Classics are available in two solid colors.

To meet today's high style of architecture design, we also offer a number of standard exterior colors and the flexibility of a fully custom exterior option.

DURALITE SPACER BARS

Duralite® spacer bars have been proven to outperform all other spacer bars reducing the energy transfer between panes of glass.



BETTERVUE® SCREENS

All screens come to match your window finish with BetterVue® screen mesh for the best view everywhere.



JAMB EXTENSIONS

Jamb extensions come factory applied or loose. They are available in either maintenance-free vinyl clad or natural wood, up to a 7 in. wall depth, giving you plenty of options to match your décor.



Why Hayfield?

Hayfield Window & Door uses the most energy-efficient components, and offers high-performance options that can help cut utility bills and save money. Manufactured in Minnesota by qualified, experienced craftsmen since 1951, our team provides superior customer service before, during, and after each sale. Hayfield's windows and doors are built to endure the harsh weather conditions of the upper Midwest while creating comfort and efficiency all year long. All Vinyl Classics are covered by a limited lifetime warranty. Visit hayfieldwindows.com for more information.

